

50
Years of USA
Manufacturing

Drains and Sumps



Drains & Suctions - 8" & 10" Ultra Retro Suction Outlet & 10" Covers & Frames



640-1800 V

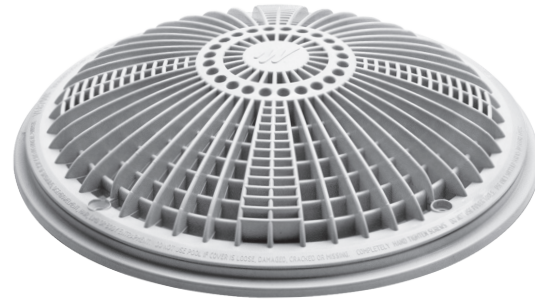
SPECIFICATIONS:

- Total Open Area: 14.8 sq. in.
- Frame Size: 8" Round
- Floor Flow Rate: 120 GPM, 2" & 2.5" plumbing
- Wall Flow Rate: 80 GPM, 2" & 2.5" plumbing



Part No.	Description
640-180x V	8" Tru Flo Cover & Frame

Note: Replace the final x in part number with color of choice:
"x" = 0 - white, 1 - black, 7 - gray, 9-dkg - dark gray



640-1900 V

SPECIFICATIONS:

- Total Open Area: 30.9 sq. in.
- Frame Size: 10" Round
- Floor Flow Rate: 200GPM, 3" plumbing
- Wall Flow Rate: 136 GPM, 3" plumbing



Part No.	Description
640-190x V	10" Tru Flo Cover & Frame

Note: Replace the final x in part number with color of choice:
"x" = 0 - white, 1 - black, 7 - gray

Drains & Suctions - 10" Ultra Retro Suction Outlet - Vinyl & Anti-Vortex Drains



640-2140 V

SPECIFICATIONS:

- Total Open Area: 20.4 sq. in.
- Frame Size: 10" Round
- Floor Flow Rate: 178 GPM, 2" & 3" plumbing
- Wall Flow Rate: 132 GPM, 2" & 3" plumbing



Part No.	Description
640-214x V	10" Ultra-Retro Drain Suction Outlet - Vinyl



640-2310 V

SPECIFICATIONS:

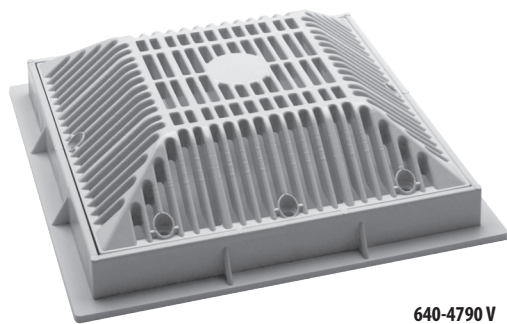
- Total Open Area: 11.83 sq. in.
- Frame Size: 9" Round
- Floor Flow Rate: 100 GPM, 2" & 2.5" plumbing
- Wall Flow Rate: 64 GPM, 2" & 2.5" plumbing



Part No.	Description
640-231x V	8" Anti-Vortex Cover & Frame

Note: Replace the final x in part number with color of choice:
"x" = 0 - white, 1 - black, 7 - gray, 9-dkg - dark gray, 9-bei - beige

9" x 9" & 12" x 12" Grate & Frame



640-4790 V

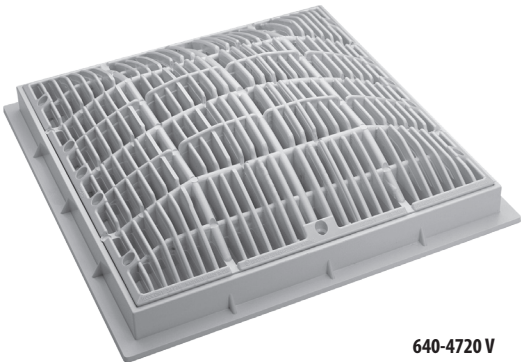
SPECIFICATIONS:

- Total Open Area: 43.6 sq. in.
- Frame Size: 10.375" x 10.375"
- Floor Flow Rate: 240 GPM, 3" plumbing
- Wall Flow Rate: 208 GPM, 3" plumbing



Part No.	Description
640-479xV	9" x 9" Grate & Frame

Note: Replace the final x in part number with color of choice:
"x" = 0 - white, 1 - black, 7 - gray, 9-dkg - dark gray



640-4720 V

SPECIFICATIONS:

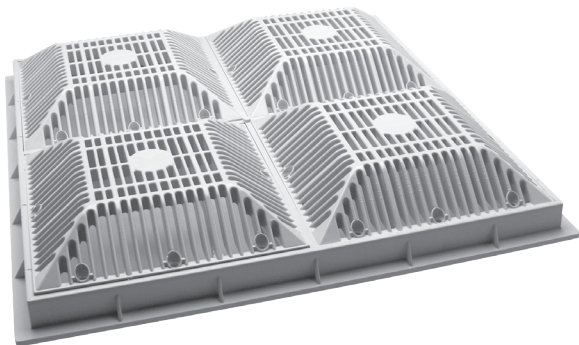
- Total Open Area: 62.4 sq. in.
- Frame Size: 13.250" x 13.250"
- Floor Flow Rate: 356 GPM, 4" plumbing
- Wall Flow Rate: 280 GPM, 4" plumbing



Part No.	Description
640-472xV	12" x 12" Grate & Frame

Note: Replace the final x in part number with color of choice:
"x" = 0 - white, 1 - black, 7 - gray, 9-dkg - dark gray

18" x 18" & 24" x 24" Grate & Frame



640-4770 V

FEATURES:

- Total Open Area: 174.4 sq. in.
- Frame Size: 19.5" x 19.5"
- Floor Flow Rate: 540 GPM, 6" plumbing
- Wall Flow Rate: N/A



Part No.	Description
640-4770 V	18" x 18" Grate & Frame

Note: Replace the final x in part number with color of choice:
"x" = 0 - white (only white offered)



640-4760 V

FEATURES:

- Total Open Area: 249.6 sq. in.
- Frame Size: 25.33" x 25.33"
- Floor Flow Rate: 2035 GPM, 8" plumbing
- Wall Flow Rate: N/A



Part No.	Description
640-4760 V	24" x 24" Grate & Frame

Note: Replace the final x in part number with color of choice:
"x" = 0 - white (only white offered)

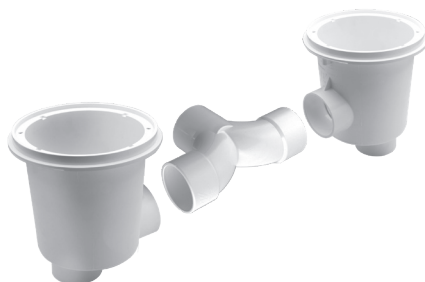
Concrete Sump Bodies & Assemblies & Vinyl Liner Sump Bodies & Assemblies

FEATURES:

- Improves flow
- Less turbulence
- Optimizes performance
- Meets Florida Building Code
- 8" diameter x 7" deep (8") (plus sockets)



413-2320



640-7420 V



Part No.	Description
413-2320	2 1/2" x 2 1/2" x 2 1/2" Sanitary Tee

Part No.	Description
674-2640	8" Deep Sump Body with plugs - Adjustable Collar - 2 1/2" S
640-742x V	8" Deep Sump Assembly with Tru Flo Cover - Adjustable Collar - 2 1/2" S

SPECIFICATIONS:

- Floor Flow Rates:
100 to 120 GPM



674-2510



672-2510



674-2550

Part No.	Description
8" Standard Drains	
674-2510	8" Std Sump Body Assembly with Plugs - Concrete - 2"
640-8500 V	8" Sump Assembly - Concrete - 2" S - with 8" Tru Flo Drain Cover - White
8" Deep Drains	
674-2610	8" Deep Sump Body Assembly with Plugs - Concrete - 2 1/2" S
640-2410 V	8" Deep Sump - 2 1/2" S - Grated A/V
640-7410 V	8" Deep Sump Assembly - Concrete - 2 1/2" S - with 8" Tru Flo Drain Cover
640-7417 V	8" Deep Sump Assembly - Concrete - 2 1/2" S - with 8" Tru Flo Drain Cover - Gray
10" Deep Drains	
674-2910	10" Deep Sump Body - Concrete - 3" S with Plug
640-7610 V	10" Deep Sump Assembly - Concrete - 3" S - with 10" Tru Flo Drain Cover
8" V/L Drains	
640-8800 V	8" Sump Assembly - Vinyl - 2" S - with 8" Tru Flo Drain Cover

Part No.	Description
8" V/L Drains (continued)	
640-8807 V	8" Sump Assembly - Vinyl - 2" S - with 8" Tru Flo Drain Cover - Gray
640-2260 V	8" Vinyl Liner Tru Flo Replacement Cover Kit
8" Std Drains- Adjustable Collar	
674-2550	8" Sump Concrete Body - Adjustable Collar - 2" S with Plugs (Side x Bottom)
640-2920 V	8" Sump Assembly - Adjustable Collar - 2" S (Side x Bottom) - w/8" Anti-Vortex Drain Cover - White
640-2927 V	8" Sump Assembly - Adjustable Collar - 2" S (Side x Bottom) - w/8" Anti-Vortex Drain Cover - Gray
640-2347 V	8" Anti-Vortex Drain Cover and Extended Collar Assembly (gray)
8" Deep Drains- Adjustable Collar	
674-2640	8" Deep Sump Concrete Body - Adjustable Collar - 2" S with Plugs (Side x Bottom)
640-7420 V	8" Deep Sump Assembly - Adjustable Collar - 2 1/2" S - with 8" Tru Flo Drain Cover - White

Adjustable Collars for Sump Bodies

FEATURES:

- Collar and cover in white and colors
- Drain Cover UL Listed



8"

SPECIFICATIONS:

- Floor Flow Rate: 100 GPM

Part No.	Description
640-2347 V	8" Anti-Vortex Drain Cover & Extended Collar Assembly - Gray

6" Suctions



640-8210 V

SPECIFICATIONS:

- Wall Flow Rate: 191 GPM with 215-8200, 215-8230 & 215-9290
- Wall Flow Rate: 136 GPM with 215-8220 & 215-8210
- Wall Flow Rate: 77 GPM with 215-8240 & 215-8250



Part No.	Description
640-820x V	6" Ultra Suction (Model 640-82XX V) with 2" Equalizer Wall Fitting
640-821x V	6" Ultra Suction (Model 640-82XX V) with 2" Insider Wall Fitting
640-824x V	6" Ultra Suction (Model 640-82XX V) with 1 1/2" Threaded Wall Fitting
640-8290 V	6" Ultra Suction, 2" Bulkhead Fitting Deep Socket – 2" S x 2.5" Length - White
640-8297 V	6" Ultra Suction, 2" Bulkhead Fitting Deep Socket – 2" S x 2.5" Length - Gray

Diamond Strip Drains & Drain Assemblies



640-1360 V

SPECIFICATIONS:

- Frame Size: 32" Channel
- Floor Flow Rate (One Port Center): 280 GPM, 2.5" plumbing
- Floor Flow Rate (Two Ports): 320 GPM, 2.5" plumbing
- Wall Flow Rate (One Port Center): 216 GPM, 2.5" plumbing
- Wall Flow Rate (Two Ports): 216 GPM, 2.5" plumbing
- Two 2" MPT Plugs Included

Part No.	Description
640-136x V	32" Diamond Strip Drain and Sump Assy for Concrete
640-137x V	32" Diamond Strip Drain Cover with Frame Assy

Part No.	Description
645-1320	32" Strip Drain Body Assy w/o Cover/Screws

Note: Replace the final x in part number with color of choice:
"x" = 0 - white, 1 - black, 7 - gray

Portable Spas Only

(At least 2 identical suction outlets must be connected to each pump)

10" Ultra Fiberglass Suction Outlets

**WORKS ON
FIBERGLASS
POOLS AS
WELL!**



640-2150S-CW V

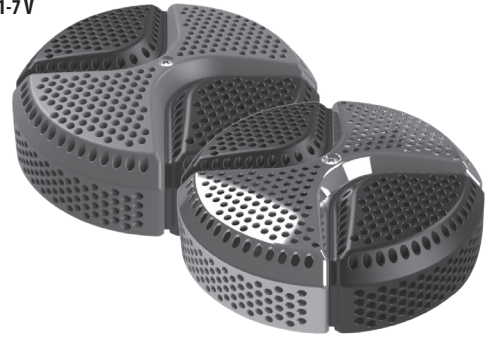
FEATURES:

- High flow suction outlet with attractive, safe and easy to service design
- Great for both new and retrofit fiberglass pool and spa applications
- Sumpless: No sump is required
- Ease of installation: Installs on Fiberglass Pool and Spas utilizing just one nut
- Tested, certified and listed by NSF to the latest requirements of VGBA and ANSI/PHTA/ICC-16 2017
- Available in colors to complement any interior
- Floor Flow Rate: 191 GPM with 3" plumbing
- Wall Flow Rate: 132 GPM with 3" plumbing

Part No.	Description
640-2150-CW V	10" Ultra Retro Vinyl Suctions Outlet
640-2150S-CW V	10" Ultra Retro Vinyl Suctions Outlet

5" Designer Pro Series Suctions

640-5201-7 V



640-5301 V

FEATURES:

- Wall Flow Rate: 252 GPM (portable spas only) with 2.5" plumbing
- Two tone color for additional color coordination
- Available in Stainless Steel / color of your choice

Part No.	Description
640-520x V	5" Designer Pro Series Suction - 2" S - Two Tone
640-525x V	5" Designer Pro Series Suction - 2 1/2" S - Two Tone
640-530x V	5" Designer Pro Series Suction - 2" S - Two Tone Stainless Steel
640-535x V	5" Designer Pro Series Suction - 2 1/2" S - Two Tone Stainless Steel

SPC-3 VP - 5" Super Hi-Flo Suctions



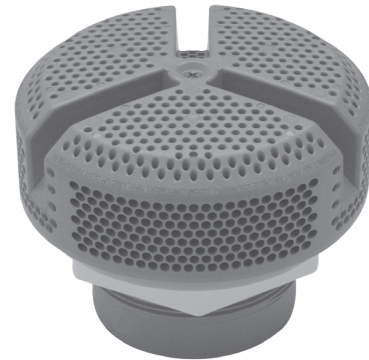
640-3797 V

FEATURES:

- Wall Flow Rate: 251 GPM (portable spas only)
- Floor Flow Rate: 180 GPM with 2" plumbing
- 2 1/2" can be used with fittings (on next page)

Part No.	Description
640-378x V	5" Super Hi-Flo Suction Assembly - 2" S
640-379x V	5" Super Hi-Flo Suction Assembly - 2 1/2" S
640-3570S V	5" Super Hi-Flo Suction Assembly - 2" S - Stainless Steel
640-3580S V	5" Super Hi-Flo Suction Assembly - 2 1/2" S - Stainless Steel

5" Ultra Hi-Flo Suctions for Portable Spas



640-3937 V

FEATURES:

- Wall Flow Rate: 264 GPM (portable spas only)
- 2 1/2" can be used with fittings (below)

Part No.	Description
640-394x VP	5" Ultra Flo Suction Assembly - 2" S
640-393x VP	5" Ultra Flo Suction Assembly - 2 1/2" S

3.5" Ultra Hi-Flo Suctions



640-3497 VP

SPECIFICATIONS:

- Total Open Area: 6.24 sq. in.
- Floor Flow Rate: N/A
- Wall Flow Rate: 160 GPM with 1.5" plumbing
- For portable spas

SPC-2 VP - 3.5" Hi-Flo Suctions



640-3250 VP

SPECIFICATIONS:

- Total Open Area: 4.01 sq. in.
- Floor Flow Rate: N/A
- Wall Flow Rate: 128 GPM with 1.5" plumbing

Part No.	Description
640-349x VP	3.5" Ultra Hi-Flo Suction - Tall Assembly

Part No.	Description
640-325x VP	Hi-Flo Suction Assembly - 1 1/2" Hex (without Vacuum Break)
640-328x VP	Hi-Flo Suction Assembly - 1 1/2" 90° Ell (without Vacuum Break)
640-348x VP	Hi-Flo Suction Assembly - 1 1/2" 90° Ell (w/642-4120 VAC Vac Break)

Low Profile Drain Assemblies



640-0427



640-0401S



640-0437

90° Ell Lo-Pro Spa Floor Drains



640-4340

**For Service
Drains Only**

Part No.	Description
640-0400	3/4" Socket / 1" Spigot
640-0420	Shur-Grip - 3/4" SB
640-0401S	3/4" Socket - Stainless Steel Cover
640-0430	Large Face - 1/2" S

Part No.	Description
640-4340	3/4" S Floor Drain
640-4400	1" S Floor Drain
640-4440	3/4" SB Floor Drain

